

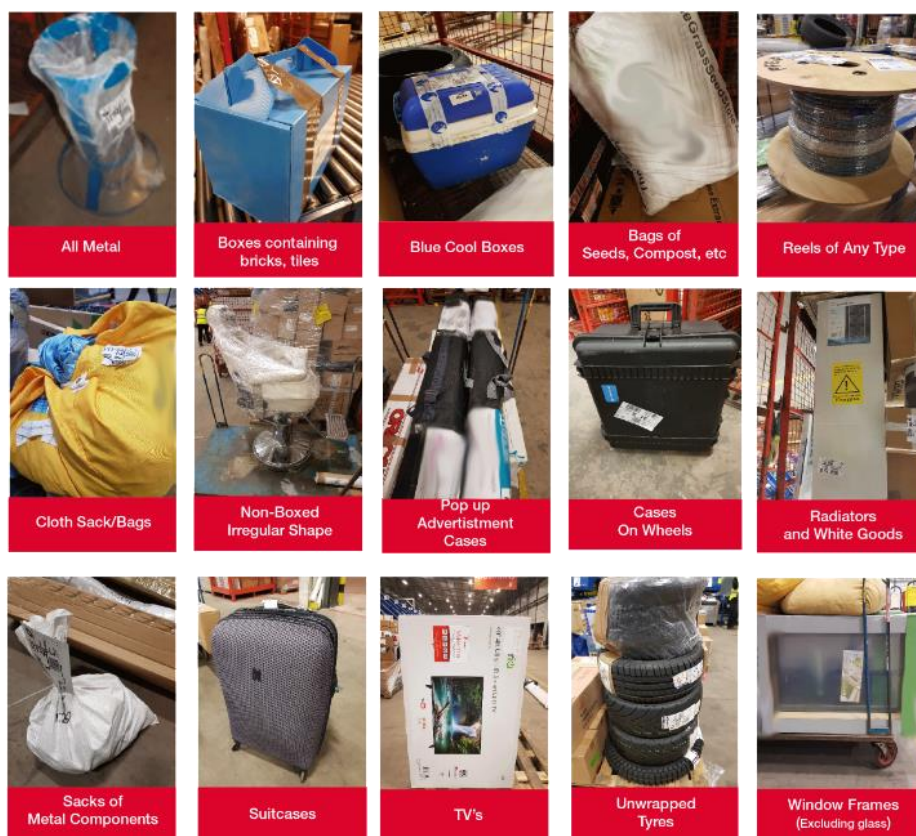
Product Changes

Non - Conveyable Items

Non-conveyable packages (NC) are no longer items that only fall outside of the standard ND service restrictions (120x55x50cm), items that are sent in any other packaging than boxes are now subject to an NC surcharge as we are not able to process these through the automated systems meaning they have to be handled and sorted individually by hand.

As you can imagine this is a time consuming and costly process to ensure all items arrive safely to their destination and so for this reason these items are now subject to an NC charge and will take effect on Monday 10th December. Examples of such items are shown below (This list is non-exclusive).

Select "NC" Service Code for the following:



Please ensure all consignments are manifested correctly.

ALL ND consignments must be BOXED with maximum dimensions of 120x55x50cm. Any parcels that fall within these dimensions which are not boxed must be manifested as a non-conveyable (NC) consignment in the same way that any parcel over the standard ND restrictions should be.

Any consignments that are manifested incorrectly are subject to a £5 fine as well as the additional NC service charge.

If you have any further queries please do not hesitate to contact us on 01908 586999 and we will gladly talk you through these changes.